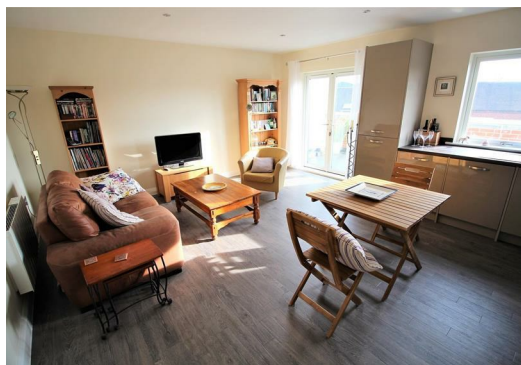




Chantry Court, Sandford Gate, Lower Sandford

Lichfield, WS13 6FJ

£1,095 PCM



Newton Fallowell are delighted to offer to let this unique, immaculate two bedroom modern Penthouse with a large, south facing outside Terrace (285 ft2) located on the edge of the City Centre.

The property comprises of a spacious open plan lounge/kitchen with integrated appliances with French doors opening to terrace area, two bedrooms, master with en-suite and French doors opening to Terrace, modern bathroom and allocated parking.

Viewing essential call Newton Fallowell to arrange your viewing. Available mid January.

Outside

Living Room

Kitchen

Master Bedroom

Es-Suite

Bedroom Two

Bathroom

Balcony

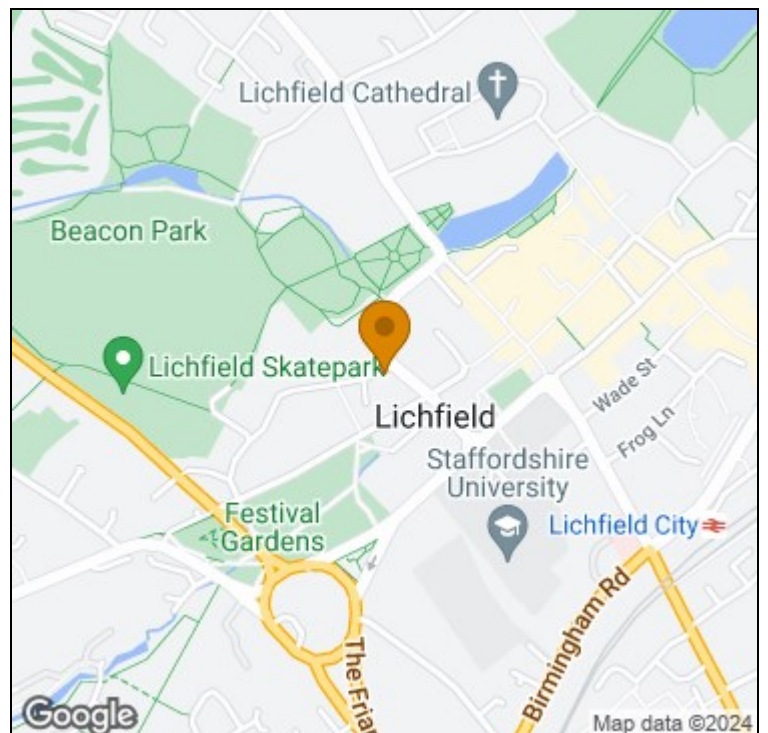


Secure Allocated Parking



Energy Efficiency Rating		
	Current	Potential
Very energy efficient - lower running costs		
(92 plus) A		
(81-91) B		
(69-80) C		
(55-68) D		
(39-54) E		
(21-38) F		
(1-20) G		
Not energy efficient - higher running costs		
England & Wales	EU Directive 2002/91/EC	

Environmental Impact (CO ₂) Rating		
	Current	Potential
Very environmentally friendly - lower CO ₂ emissions		
(92 plus) A		
(81-91) B		
(69-80) C		
(55-68) D		
(39-54) E		
(21-38) F		
(1-20) G		
Not environmentally friendly - higher CO ₂ emissions		
England & Wales	EU Directive 2002/91/EC	



t: 01543251310 e: lichfield@newtonfallowell.co.uk

www.newtonfallowell.co.uk